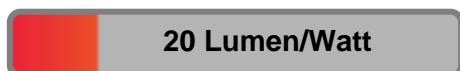


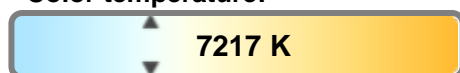
Light efficiency:



Light quality:



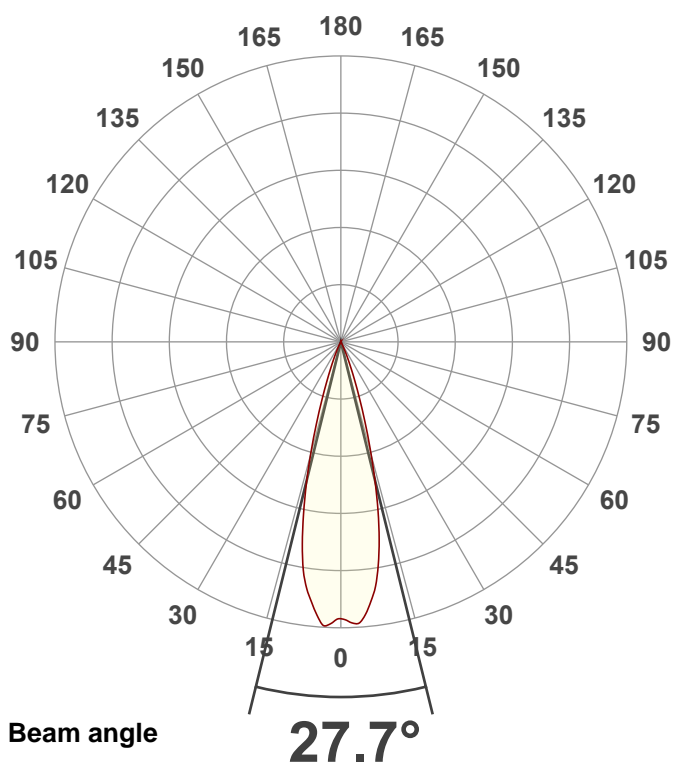
Color temperature:



Output: 497 lm
Peak: 2314 cd
Power: 24.8 W
PF: 0.6

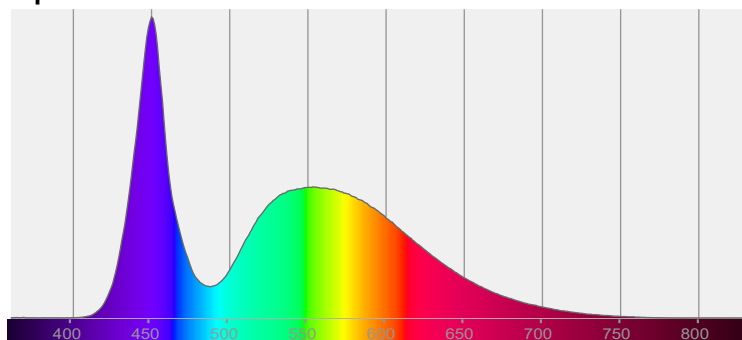


Product name:
Stealth Wash Zoom (Zoom Out White)
Item number:
Zoom Out White
Date and time:
5/7/2019 2:45:18 PM

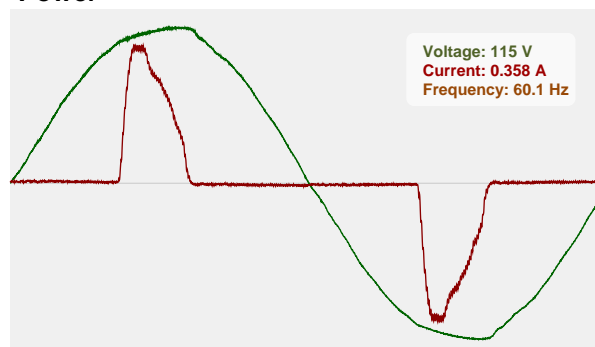


CIE 1931
x: 0.304
y: 0.311

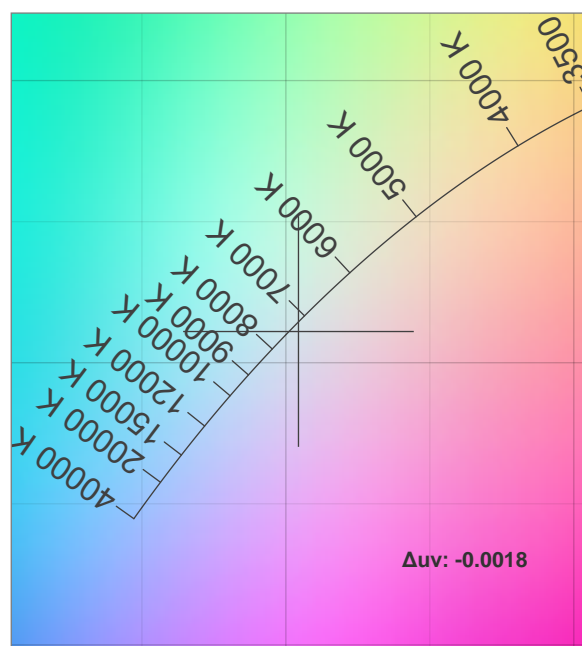
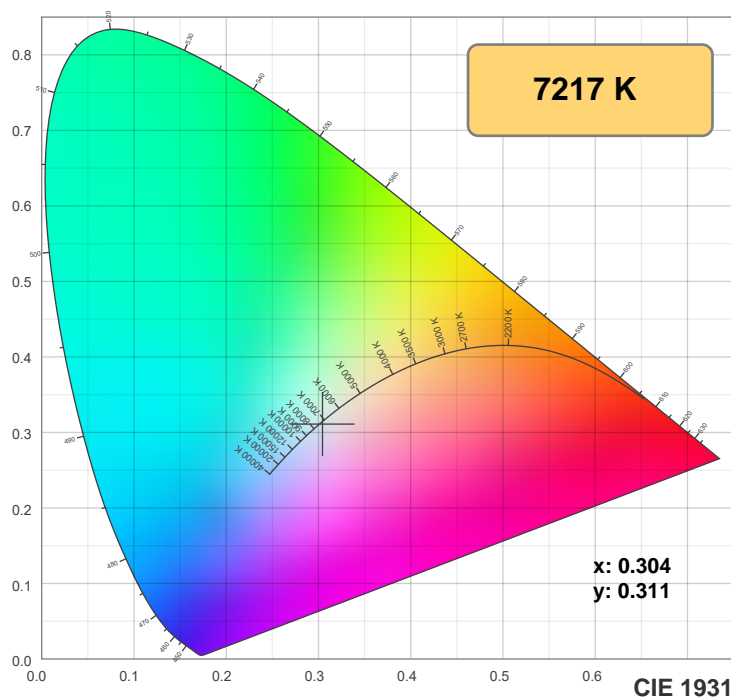
Spectra



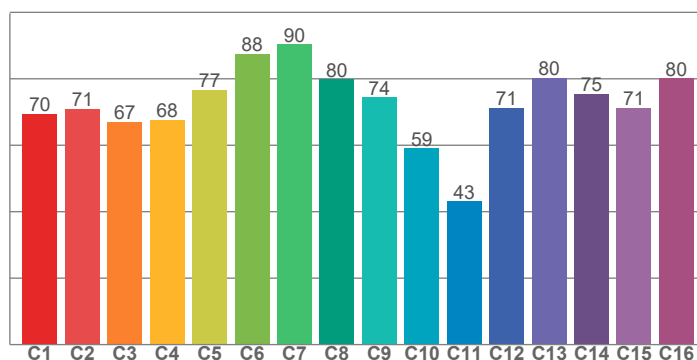
Power



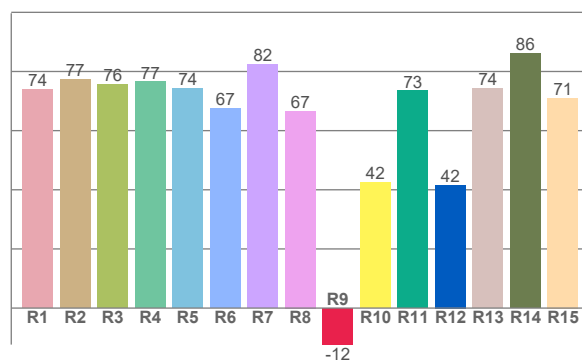
Color details



TM-30: 72.8



CRI: 74.3 (R1-R8)



CRI R values, only R1-R8 are used to calculate final CRI value

R1	R2	R3	R4	R5	R6	R7	R8	R9	R10	R11	R12	R13	R14	R15
74.0	77.4	75.7	76.5	74.2	67.4	82.5	66.6	-12.3	42.5	73.5	41.6	74.3	86.1	71.1

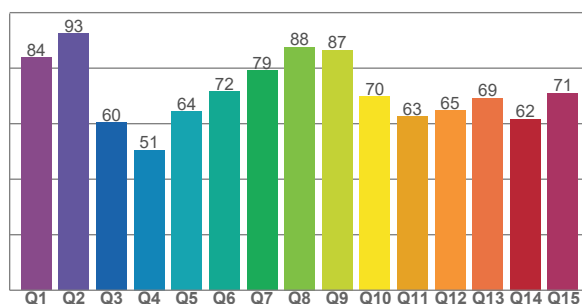
TM30 C values, 16 binned values out of total of 99 C values

C1	C2	C3	C4	C5	C6	C7	C8	C9	C10	C11	C12	C13	C14	C15	C16
69.5	71.0	67.1	67.6	76.7	87.5	90.4	79.9	74.4	59.1	43.1	71.3	80.4	75.5	71.3	80.2

CQS Q values

Q1	Q2	Q3	Q4	Q5	Q6	Q7	Q8	Q9	Q10	Q11	Q12	Q13	Q14	Q15
83.9	92.5	60.4	50.6	64.4	71.6	79.1	87.5	86.6	69.8	62.6	64.8	69.2	61.7	71.1

CQS: 69.5



Color parameters

Color temperature	Color rendering index	Red component	Color fidelity	Color gamut	Color quality scale	Color coordinate cie 1931	Color coordinate cie 1931	Color coordinate	Color coordinate	Color deviation from black body
CCT	CRI	CRI R9	TM30 Rf	TM30 Rg	CQS	x	y	u	v	Δuv
7217 K	74.3	-12.3	72.8	94.1	69.5	0.304	0.311	0.199	0.305	-0.0018

TM-30 details

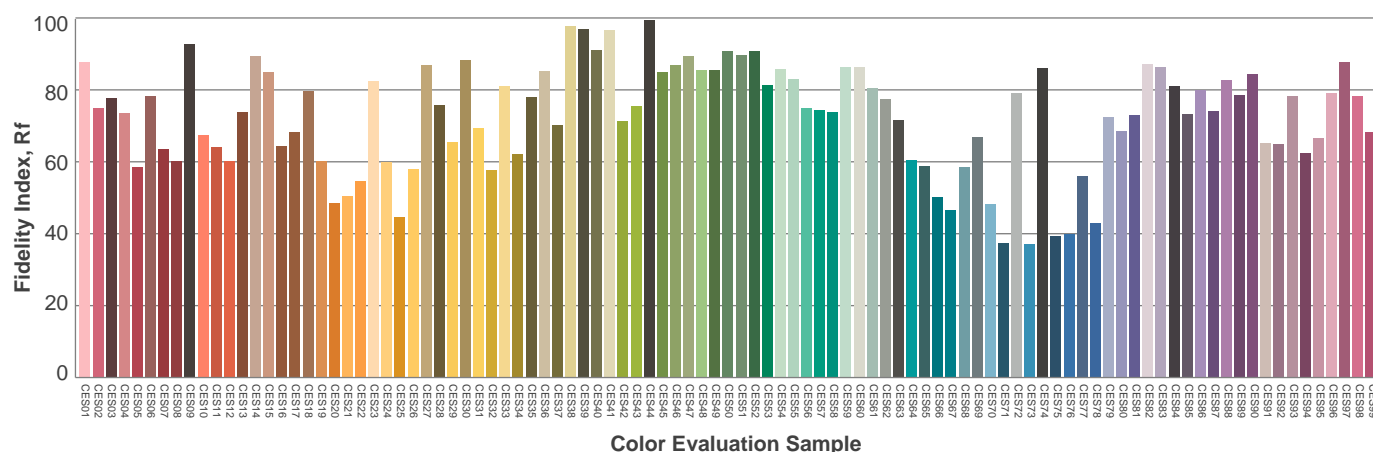
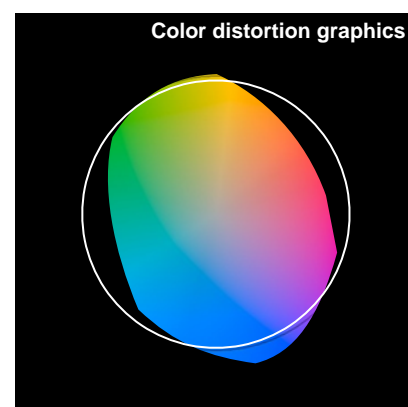
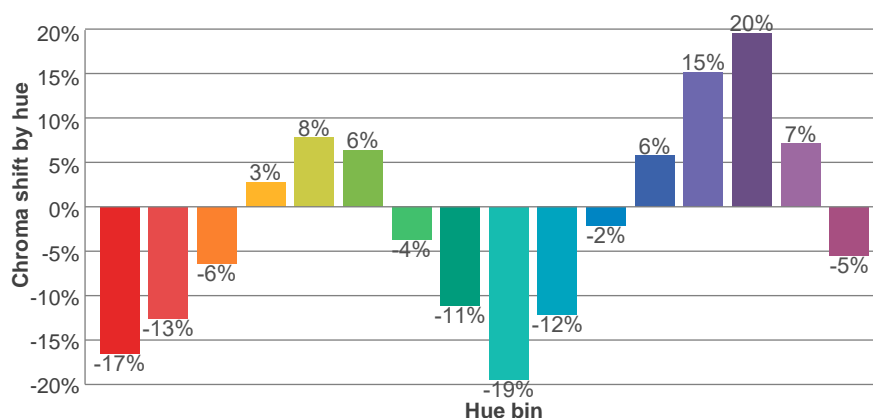
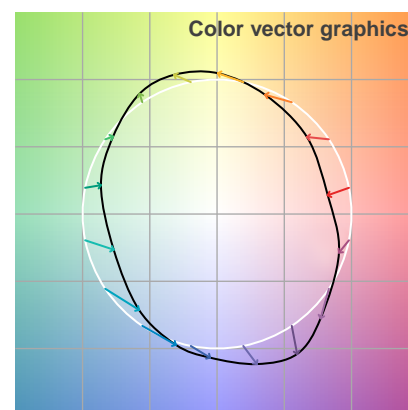
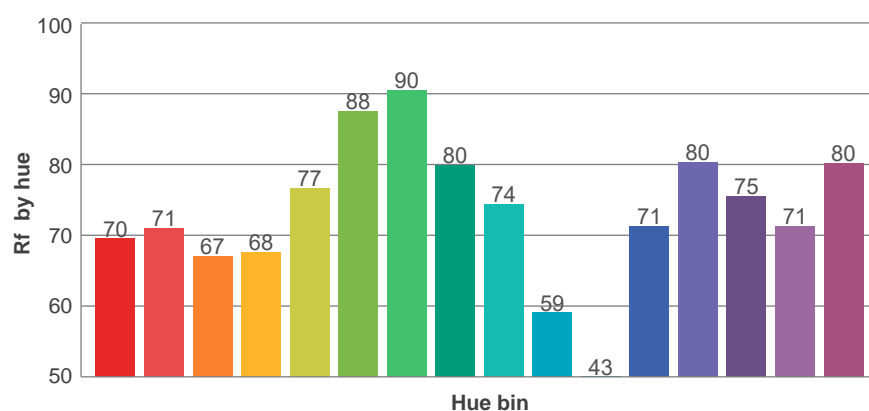
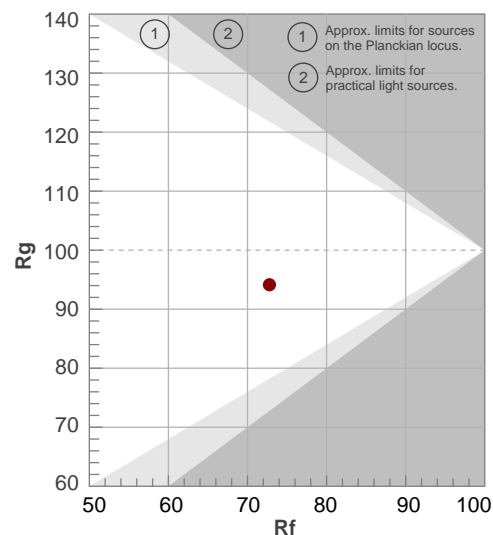
Rf 72.8

Fidelity index Rf

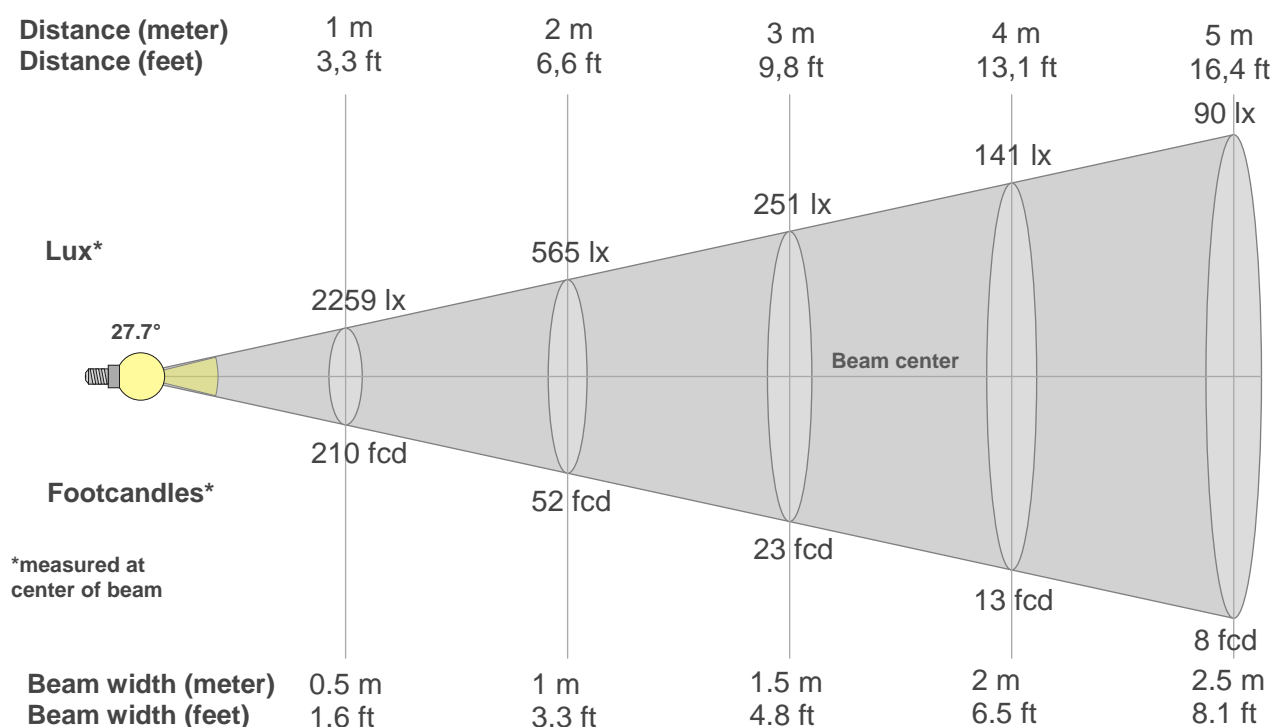
Rg 94.1

Gamut index Rg

Hue Bin	R _f	Shifts (%)	
		Chroma	Hue
1	70	-17%	-2%
2	71	-13%	10%
3	67	-6%	20%
4	68	3%	20%
5	77	8%	11%
6	88	6%	-2%
7	90	-4%	-5%
8	80	-11%	-4%
9	74	-19%	11%
10	59	-12%	27%
11	43	-2%	29%
12	71	6%	16%
13	80	15%	7%
14	75	20%	-8%
15	71	7%	-22%
16	80	-5%	-10%



Beam details



Beam intensities from 1-20m

1m	2m	3m	4m	5m	6m	7m	8m	9m	10m	11m	12m	13m	14m	15m	16m	17m	18m	19m	20m
3.3ft	6.6ft	9.8ft	13.1ft	16.4ft	19.7ft	23ft	26.2ft	29.5ft	32.8ft	36.1ft	39.4ft	42.7ft	45.9ft	49.2ft	52.5ft	55.8ft	59.1ft	62.3ft	65.6ft
2259lx	565lx	251lx	141lx	90lx	63lx	46lx	35lx	28lx	23lx	19lx	16lx	13lx	12lx	10lx	9lx	8lx	7lx	6lx	6lx
209.9fcd	52.5fcd	23.3fcd	13.1fcd	8.4fcd	5.8fcd	4.3fcd	3.3fcd	2.6fcd	2.1fcd	1.7fcd	1.5fcd	1.2fcd	1.1fcd	0.9fcd	0.8fcd	0.7fcd	0.6fcd	0.6fcd	0.5fcd

Intensities in 0° c-plane

0°	2°	4°	6°	8°	10°	12°	14°	16°	18°	20°	22°	24°	26°	28°	30°	32°	34°	36°	38°
2259	2285	2282	2170	2017	1775	1474	1131	800	519	316	182	94	44	15	0	0	0	0	0
100%	101%	101%	96%	89%	79%	65%	50%	35%	23%	14%	8%	4%	2%	1%	0%	0%	0%	0%	0%

Intensities in 90° c-plane

0°	2°	4°	6°	8°	10°	12°	14°	16°	18°	20°	22°	24°	26°	28°	30°	32°	34°	36°	38°
2259	2285	2282	2170	2017	1775	1474	1131	800	519	316	182	94	44	15	0	0	0	0	0
100%	101%	101%	96%	89%	79%	65%	50%	35%	23%	14%	8%	4%	2%	1%	0%	0%	0%	0%	0%

Intensities in 180° c-plane

0°	2°	4°	6°	8°	10°	12°	14°	16°	18°	20°	22°	24°	26°	28°	30°	32°	34°	36°	38°
2259	2295	2289	2163	2017	1790	1474	1131	795	506	306	179	102	57	28	0	0	0	0	0
100%	102%	101%	96%	89%	79%	65%	50%	35%	22%	14%	8%	4%	3%	1%	0%	0%	0%	0%	0%

Intensities in 270° c-plane

0°	2°	4°	6°	8°	10°	12°	14°	16°	18°	20°	22°	24°	26°	28°	30°	32°	34°	36°	38°
2259	2295	2289	2163	2017	1790	1474	1131	795	506	306	179	102	57	28	0	0	0	0	0
100%	102%	101%	96%	89%	79%	65%	50%	35%	22%	14%	8%	4%	3%	1%	0%	0%	0%	0%	0%

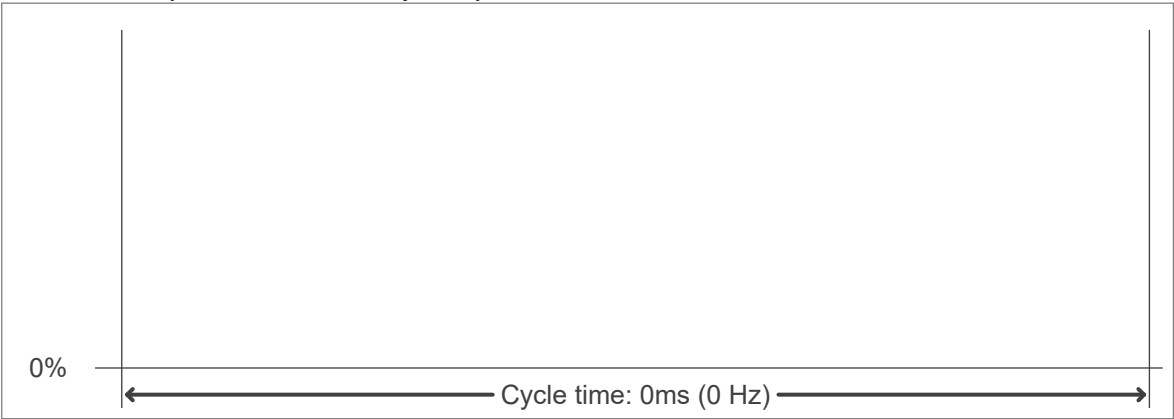
Beam angle 50%	Field angle 10%	Cutoff angle 2,5%	Intensity ratio in 120° cone	Intensity ratio in 90° cone
27.7°	42.1°	51.2°	100.0%	100.0%



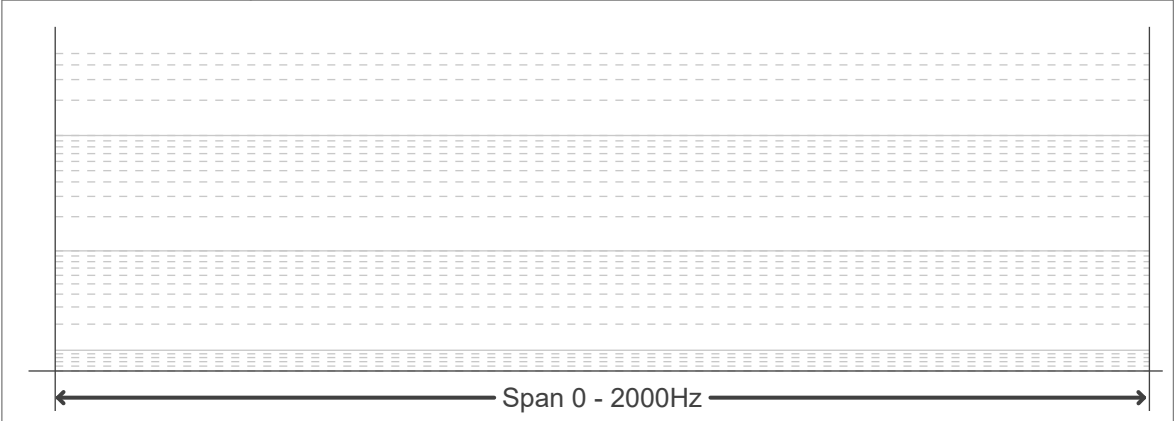
Flicker curve (complete sampled flicker signal)



Flicker frame (frame of one flicker period)



Flicker FFT (frequency scope of flicker curve)



Flicker results:

Flicker frequency:		n/a Hz	
Flicker index:	n/a	JA8/10 40Hz	n/a %
Flicker percentage:	n/a %	JA8/10 90Hz	n/a %
SVM: (Visual flicker)	n/a	JA8/10 200Hz	n/a %
PstLM	n/a	JA8/10 400Hz	n/a %
Mp	n/a	JA8/10 1000Hz	n/a %

Flicker conditions:

Sample rate:	n/a samples/second
--------------	--------------------